

# AA6S90H

**STANDARD MATERIALS AND CONSTRUCTION:**

**FRAME:** .080" thick extruded aluminum 6063-T6/T52 alloy.  
**BLADE:** .080" thick extruded aluminum 6063-T6/T52 alloy, blades on 4" centers.

**LOUVER FACE:** Full width sill with drain head and non-drain blades contained within the drain jambs.

**LINKAGE:** Extruded aluminum, concealed in channel out of airstream. Pivots are .50" dia. machined steel, cadmium plated and chromate treated. Pivots rotate in a celcon bearing. A .312" dia. aluminum linkage rod is locked to the pivot by a ¼ - 20 set screw with an epoxy locking patch.

**SHAFTS:** .50" dia. aluminum "pin-lock" rod.

**SEALS:** Extruded silicone rubber seal at blade edge. Polyurethane at the jambs.

**SCREEN:** (When indicated, in a removable frame.)

½" flattened aluminum, .051" thick

or- ½" sq. mesh, intermediate double-crimped aluminum wire, .063 dia.

or- 19/64 mesh, .011" dia. aluminum wire, insect screen

**FINISH:** Mill.

**OPTIONS:**

Finish - Baked Enamel, Kynar, Anodize

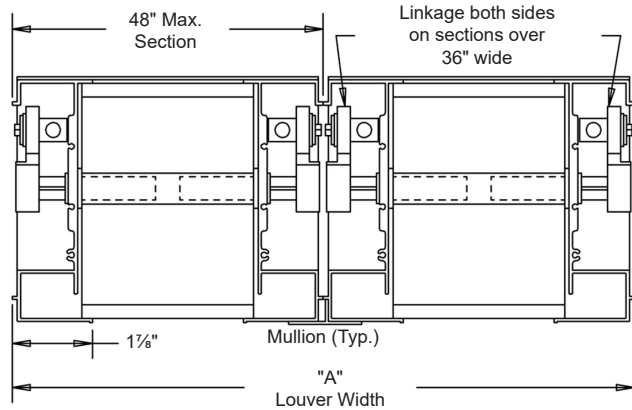
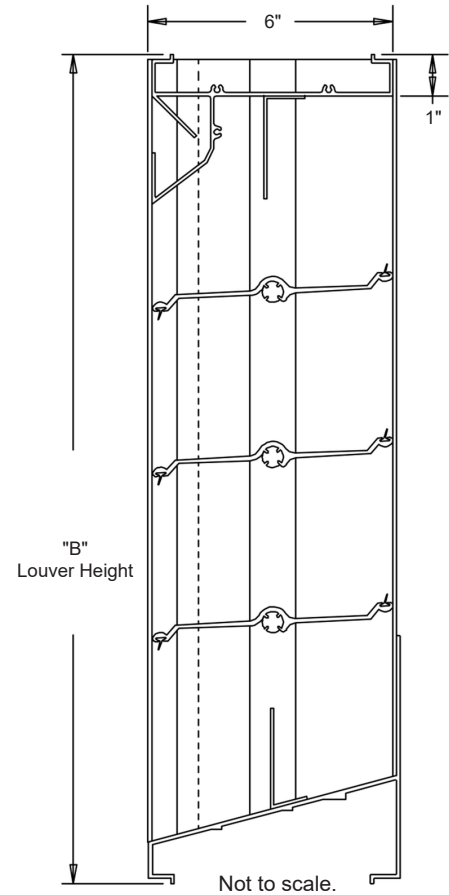
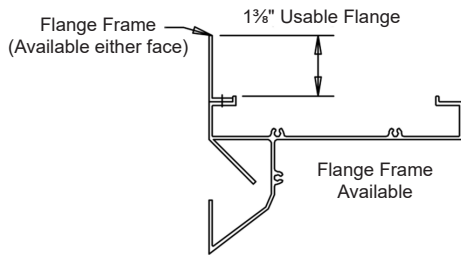
Actuators - Electric, Pneumatic, Manual, etc.

**NOTES:**

1. "A" width and "B" height are opening dimensions. Louvers are provided ½" undersize.

**LOUVER SIZES:**

Min Panel	Max Single Panel
12"W x 12"H	48"W x 96"H



Nominal Deductions will be made to the opening size given.

In the interest of product development, Airline Louvers reserves the right to make changes without notice.

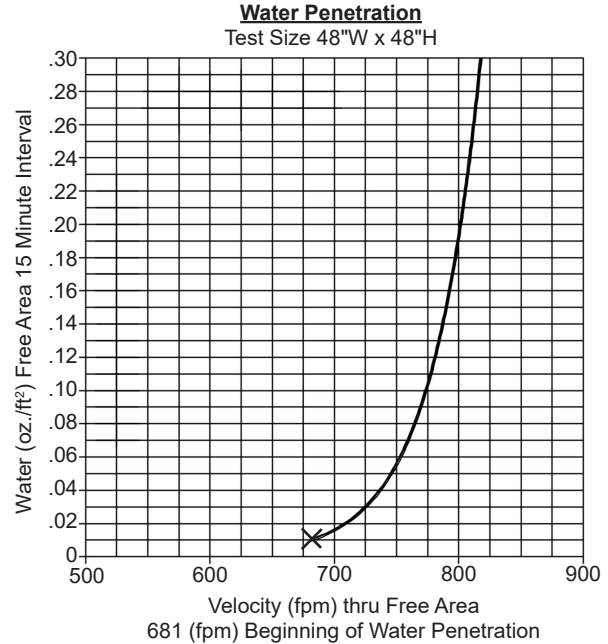
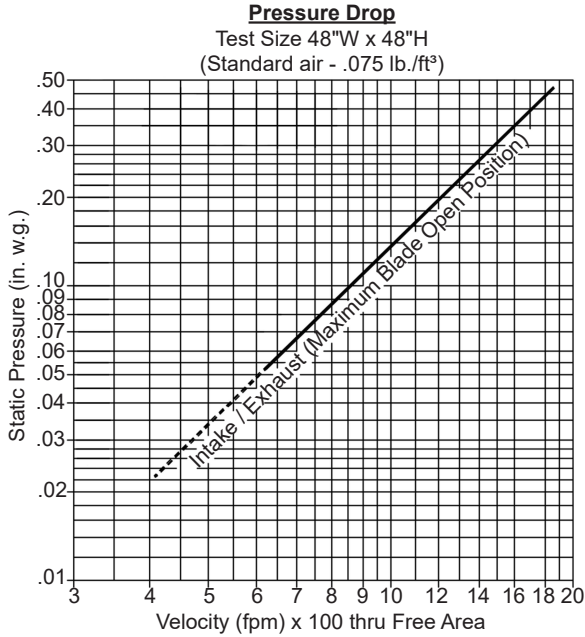
<b>Item #</b>	<b>Qty</b>	<b>Width</b>	<b>Height</b>	<b>Width</b>	<b>Height</b>	<b>Mullion</b>	<b>Type</b>	<b>Location</b>		
		<b>Opening Size</b>		<b>Louver Size</b>			<b>Screens</b>			<b>Union Made</b>
<b>Arch. / Eng. :</b>						<b>EDR:</b>		<b>ECN:</b>		<b>Job:</b>
<b>Contractor:</b>										
<b>Project:</b>						<b>Date:</b>		<b>DWN:</b>		<b>DWG:</b>

# AA6S90H

Pressure Drop: .14 in. w.g. at 1000 fpm

Free Area: 10.71 sq.ft. = 67% for 48"W x 48"H sample tested in accordance with AMCA Standard 500-L-99

Beginning point of Water Penetration: 681 fpm



The AMCA Certified Ratings Seal applies to Air Performance only. Tested in accordance with AMCA 500-L-99 Test Figure 5.5-6.5

		Free Area (sq.ft.)						
		Width (in.)						
		12"	18"	24"	30"	36"	42"	48"
Height (in.)	12"	.22	.39	.56	.73	.90	1.07	1.24
	24"	.79	1.38	1.97	2.56	3.15	3.74	4.33
	36"	1.35	2.36	3.37	4.38	5.39	6.40	7.41
	48"	1.91	3.34	4.77	6.21	7.64	9.07	10.71
	60"	2.47	4.32	6.18	8.03	9.89	11.74	13.59
	72"	3.03	5.31	7.58	9.86	12.13	14.41	16.68
	84"	3.59	6.29	8.99	11.68	14.38	17.07	19.77
	96"	4.16	7.27	10.39	13.51	16.63	19.74	22.86



Airline Louvers certifies that the model AA6S90H louver shown herein is licensed to bear the AMCA Seal. The ratings shown are based on tests and procedures performed in accordance with the AMCA Publication 511 and comply with the requirements of the AMCA Certified Ratings Program. The AMCA Certified Ratings Seal applies to Air Performance only.